

GUTTER OVERFLOW OPTIONS

SOLUTIONS FOR GUTTER OVERFLOW COMPATIBLE WITH STRAMIT® FASCIA AND GUTTERS.

Product Technical Supplement
FOR USE IN VICTORIA



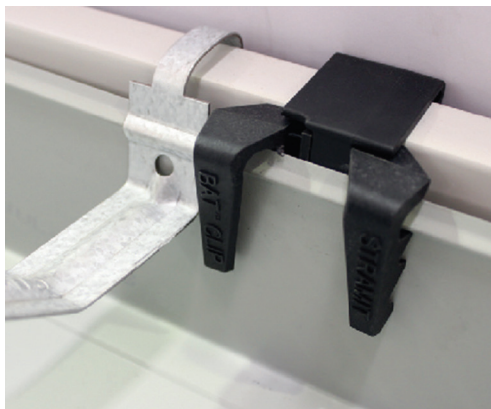
STRAMIT® GUTTER OVERFLOW OPTIONS



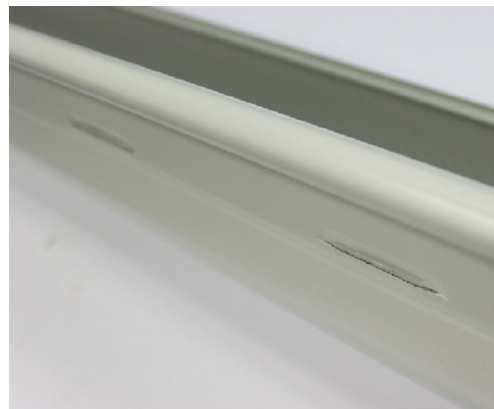
Stramit® gutter spacer



Stramit® gutter spacer installed



Stramit BAT® clip, 10mm gap between gutter and fascia



Slotted Stramit® gutter

IMPORTANT NOTICE AND DISCLAIMER

The information contained within this brochure is for general use and information only. Before application in a particular situation, Stramit recommends that you obtain appropriate independent qualified expert advice confirming the suitability of product(s) and information in question for the application proposed. While Stramit accepts its legal obligations, be aware however that to the extent permitted by law, Stramit disclaims all liability (including liability for negligence) for all loss and damage resulting from the use of the information provided in this brochure.

GUTTER OVERFLOW DESIGN

The requirements for roof drainage systems installed in Victoria are stipulated in Volume 3 of the National Construction Code. Design should be carried out by a plumber or building designer, taking into account the size of gutter, and size and number of downpipes.

The system needs to allow for overflow from gutters by installation and maintenance of suitable measures of adequate capacity. This requirement can be met by either a Deemed to Satisfy solution given in AS/NZS 3500.3 Appendix G or a Performance Solution that has been tested or verified by computation and certified.

The tables and chart in the following pages give information on three overflow options that are available for use with the Stramit® Fascia and Gutter Systems. The first is overflow slots in the front of the gutter, which is a Performance Solution, the second is the Stramit® Gutter Spacer which is also a Performance Solution, and the third is the Stramit BAT® Clip, which is a Deemed to Satisfy solution. Testing has shown that provision of a space between the gutter and the fascia is an effective means of increasing the overflow capacity. Slots in the front face of the gutter also provide a limited overflow means.

The slots in the front face of the Stramit® Victorian Quad 115 gutters have a minimum slot area of 1060mm² per metre length. These gutters have an overflow capacity of 0.5 Litre/sec/metre (L/s/m) as verified by testing. The Stramit® Easiflow gutter has even larger slots of 1480mm²/m area, allowing for an overflow of 0.8 L/s/m.

The Stramit® Gutter Spacers create a gap between the fascia and gutter of 4mm at the spacer locations, and are installed no more than 1200mm apart for the Stramit® Quad 115 gutter and 600mm apart for the Stramit® Easiflow gutter. They can be retrofitted after installation of the fascia and gutter, and fit under the snap clip. The spacer solution has been tested and found to have a minimum overflow capacity of 1.2L/s/m. Information on installation can be found on the Stramit website www.stramit.com.au. The length of the spacer used with the Stramit® Victorian Quad 115 gutter is 61mm, and with the Stramit® Easiflow gutter is 72mm.

The Stramit BAT® Clip creates a 10mm gap at the spacer location, and has an integral snap clip. According to Appendix G of the Standard AS/NZS 3500.3, the overflow capacity can range from 0.5L/s/m to above 1L/s/m depending on the position of the sloping gutter on the Stramit BAT® Clip. Information from the above standard is shown below.

Minimum h_f (mm)	12	14	16	17	19
Overflow (L/s/m)	0.2	0.4	0.6	0.8	1

h_f - distance between top of fascia and top of gutter back face. The above is applicable for sloping gutters only. Where gutter is level, the h_f value should be increased by 6mm.

Table based on information in Appendix G of AS/NZS 3500.3

CHOICE OF OVERFLOW OPTIONS

If more than one overflow option is chosen, the total overflow would be the addition of the volumes based on each individual measure.

(a) Continuous Overflow Measures

The information in this section is based on testing carried out by the Australian Steel Institute and Parametric Developments. Follow the steps given to find a suitable overflow option.

Step 1:

From the table below, based on the location of the building, determine the design rainfall intensity for overflow.

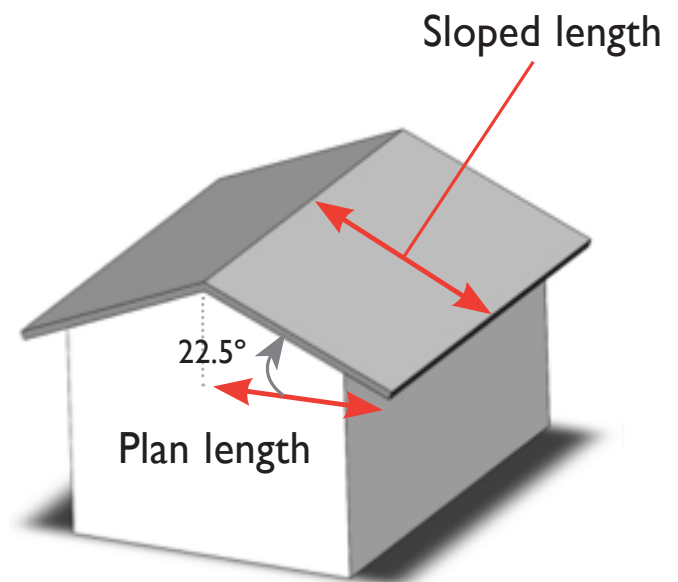
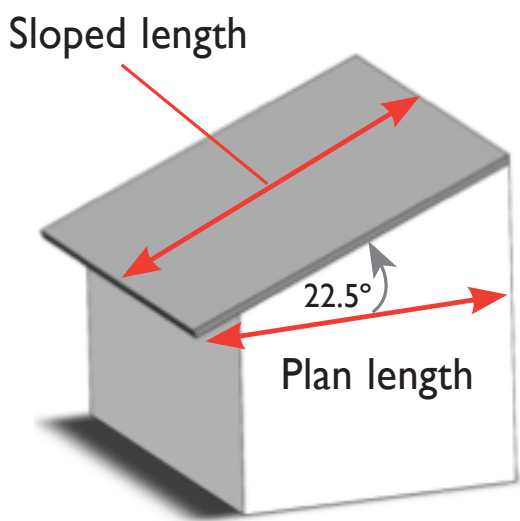
RAINFALL INTENSITIES FOR OVERFLOW DESIGN	
Location	Rainfall intensity (mm/hr)
VIC	
Ballarat	188
Benalla	194
Geelong	144
Horsham	173
Lakes Entrance	198
Melbourne	187
Hastings	145
Sorrento	140
Mildura	218
Stawell	186

For other locations, refer to the Bureau of Meteorology website for information on finding the rainfall intensity for a 100 year Average Recurrence Interval (ARI) based on Latitude and Longitude.

NOTE: Regular maintenance and cleaning of the gutter system is recommended to avoid blockages and for longer lasting product.

Step 2:

Find the sloped length of roof that feeds into the gutter. A quick guide for finding the sloped length for a 22.5 degree slope is to multiply the plan length of roof by a value of 1.21. Where there is a penetration in the roof, or water from a top roof flowing on to a bottom roof, the value needs to take this additional length into account. If the catchment area is known instead, divide this value by the gutter length to find the roof length applicable.



Step 3:

On the coloured chart, find the rainfall intensity row and move across to the roof length column. The colour of the box will give you the information on what overflow methods are available for this roof. A measure with a higher overflow capacity can be substituted for one with a lower capacity.

CHART SHOWING OVERFLOW SOLUTIONS FOR VARIOUS RAINFALL INTENSITIES																									
Rainfall intensity (mm/hr)	Length of roof feeding into gutter(m)																								
	4	4.5	5	5.5	6	6.5	7	7.5	8	8.5	9	9.5	10	10.5	11	11.5	12	12.5	13	13.5	14	14.5	15	15.5	16
125	0.14	0.16	0.17	0.19	0.21	0.23	0.24	0.26	0.28	0.30	0.31	0.33	0.35	0.36	0.38	0.40	0.42	0.43	0.45	0.47	0.49	0.50	0.52	0.54	0.56
150	0.17	0.19	0.21	0.23	0.25	0.27	0.29	0.31	0.33	0.35	0.38	0.40	0.42	0.44	0.46	0.48	0.50	0.52	0.54	0.56	0.58	0.60	0.63	0.65	0.67
175	0.19	0.22	0.24	0.27	0.29	0.32	0.34	0.36	0.39	0.41	0.44	0.46	0.49	0.51	0.53	0.56	0.58	0.61	0.63	0.66	0.68	0.70	0.73	0.75	0.78
200	0.22	0.25	0.28	0.31	0.33	0.36	0.39	0.42	0.44	0.47	0.50	0.53	0.56	0.58	0.61	0.64	0.67	0.69	0.72	0.75	0.78	0.81	0.83	0.86	0.89
225	0.25	0.28	0.31	0.34	0.38	0.41	0.44	0.47	0.50	0.53	0.56	0.59	0.63	0.66	0.69	0.72	0.75	0.78	0.81	0.84	0.88	0.91	0.94	0.97	1.00
250	0.28	0.31	0.35	0.38	0.42	0.45	0.49	0.52	0.56	0.59	0.63	0.66	0.69	0.73	0.76	0.80	0.83	0.87	0.90	0.94	0.97	1.01	1.04	1.08	1.11

Values are in L/s/m.

- Slot area 1060mm²/m or more
- Overflow volume 0.5 L/s/m*
- Slot area 1480mm²/m or more
- Overflow volume 0.8 L/s/m*
- Stramit® Gutter Spacer
- Overflow volume 1.2L/s/m†
- BAT® clip - Overflow volume 0.5 - 1.0L/s/m†

* Based on test results. Relevant certification required for these options can be obtained from your local Stramit office
 † - Value applicable to slotted or unslotted gutter
 For gutters with a ribbed rather than hook back only, the data in the table for overflow where the Stramit® Gutter Spacer is used is valid for the installation of the gutters on the third notch of the snap clip or below. If overflow provisions are required when the gutter is on the top two notches and the Stramit® Gutter Spacer is used, please contact your local Stramit office for advice.

TABLE ABOVE APPLICABLE TO THE FOLLOWING GUTTERS AT MINIMUM 1:500 SLOPE:			
Gutter Style	Overflow options for each colour on table		
	Pink	Grey	Blue**
Quad 115	Slotted gutter OR Stramit® Spacer/BAT® clip with gutter (slotted or unslotted)	Stramit® Spacer/BAT® clip with gutter (slotted or unslotted)	Stramit® Spacer/BAT® clip with gutter (slotted or unslotted)
Easiflow	Slotted gutter OR Stramit® Spacer/BAT® clip with gutter (slotted or unslotted)	Slotted gutter OR Stramit® Spacer/BAT® clip with gutter (slotted or unslotted)	Stramit® Spacer/BAT® clip with gutter (slotted or unslotted)

** below bottom red line, BAT® clip not suitable, use Stramit® Gutter Spacer

For other gutters, and for information on availability of different slot areas, please contact your local Stramit Office for advice.

An example for a rainfall intensity of 200mm/ hr and a roof length of 6.5m is given below, the solution for this case is the use of either gutter with slots or with the Stramit® Gutter Spacer/BAT® clip with slotted/unslotted gutter.

Rainfall intensity (mm/hr)	Length of roof feeding into gutter(m)													
	4	4.5	5	5.5	6	6.5	7	7.5	8	8.5	9	9.5	10	10.5
125	0.14	0.16	0.17	0.19	0.21	0.23	0.24	0.26	0.28	0.30	0.31	0.33	0.35	0.36
150	0.17	0.19	0.21	0.23	0.25	0.27	0.29	0.31	0.33	0.35	0.38	0.40	0.42	0.44
175	0.19	0.22	0.24	0.27	0.29	0.32	0.34	0.36	0.39	0.41	0.44	0.46	0.49	0.51
200	0.22	0.25	0.28	0.31	0.33	0.36	0.39	0.42	0.44	0.47	0.50	0.53	0.56	0.58

- Slotted Stramit® Quad 115/slotted Stramit® Easiflow gutter or Stramit® Gutter Spacer/BAT® clip with slotted/unslotted gutter.

Step 4:

The Stramit® Gutter Spacer solution, where required, can be used for installations using the Stramit® Fascia, Snap Clip and Gutter Stiffener Brackets.

INSTALLATION OF CONTINUOUS OVERFLOW MEASURES

Gutter and fascia installation methods are unchanged where the slotted gutters are used as the only overflow method. For installations with a Stramit® Gutter Spacer or BAT® clip, refer to the installation sheet provided with the product. If sarking is installed on the roof, ensure it does not obstruct the gap behind the gutter. If required, the Stramit® Gutter Spacer can be installed from underneath preferably at the snap clip location. If installed at any other position, the clips should not be more than 1000mm apart for Stramit® Quad 115 and 500mm apart for Stramit® Easiflow gutters. If placed under the snap clip, the installation ensures an even gap behind the gutter while if it is placed elsewhere, the gap can be variable and more brackets would be required.

Where the Stramit® Gutter is mounted to a timber fascia and Stramit® Concealed or External Brackets are used, a spacer block made of compatible material can be inserted between the Stramit® Bracket and timber fascia during installation of the bracket to create the gap, if the bracket does not already create a sufficient gap.

(b) Dedicated Overflow Measures

Dedicated overflow measures provided at discrete locations can only be accepted as overflow measures in Victoria if relevant testing and certification is provided. These measures would be considered Performance Solutions.

Find Stramit online at www.stramit.com.au.

Details of many Stramit® products can also be seen on the AIA site 'product selector' at www.selector.com.au.

Call us for further information or the name of your local distributor.

CONTACT US

Visit stramit.com.au or contact us using the details below.

REGION	LOCATION	CONTACT DETAILS	TECHNICAL ENQUIRIES
VIC	MELBOURNE 3/1464 Ferntree Gully Rd, Knoxfield VIC 3180	Ph 03 9237 6300 Fax 03 9237 6399	Ph 03 9237 6353
	ALBURY 18 Ariel Dr, Albury NSW 2640	Ph 02 6092 3700 Fax 02 6092 3766	
	BENDIGO Lot 7-9 Ramsay Court, Kangaroo Flat VIC 3555	Ph 03 5448 6400 Fax 03 5447 9677	

© 2020 Stramit Corporation Pty Limited ABN 57 005 010 195. A member of the Fletcher Building Group. Use of ™ and * indicates trade marks of Stramit Corporation Pty Limited.
This document replaces all previous issues. Please destroy, or clearly mark as superseded, all previous issues. STRO52_APR20.